

MARION'S MULTIS

The tour's multi caches will bring you to parks and recreational spots throughout the county, including two state parks, and a campground.

MOE-GT #01: Visiting the Veterans

GCB2F62 | N 39° 28.230 W 080° 07.892

 Difficulty ★★★ Terrain ★★

Code: _____

MOE-GT #02: At the Falls

GCB2H3K | N 39° 23.236 W 080° 05.237

 Difficulty ★★★ Terrain ★★★★★

Code: _____

MOE-GT #03: The Pioneers

GCB2H3M | N 39° 31.017 W 080° 05.698

 Difficulty ★★★ Terrain ★★

Code: _____

MOE-GT #04: Fishing in the Dark

GCB2H3P | N 39° 30.817 W 080° 27.672

 Difficulty ★★★★★ Terrain ★★★★★

Code: _____

MOE-GT #05: Flying Frisbees

GCB2H3T | N 39° 27.528 W 080° 08.416

 Difficulty ★★ Terrain ★★

Code: _____

RULES

Coins will be awarded on a first-come, first-served basis to any cacher who completes 16/20 caches on the tour. Qualifying participants must find at least 4/5 caches from each category and note the codeword or stamp in this book to be eligible. Finding all 20 caches is required to earn the digital souvenir.

For information on the GeoTour and a full list of caches, please visit www.GeoWoodstockXXI.com/GeoTour.

You can claim your coin at any of the following events by visiting the Marion County CVB table:

GeoWoodstock XXI (GCANXX1)

Friday (5/23) from 8 am* - 3 pm

(8 - 10 am is for VIPs & Friends of GeoWoodstock only)

Saturday (5/24) from 8 am - 5 pm

Breakfast With The Mommas (GCANXX7)

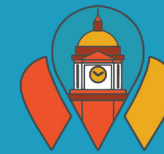
Sunday (5/25) from 8 - 11 am

Farewell From The Fort (GCANXX8)

Sunday (5/25) from 4 - 7 pm



Thank you to our sponsors



MIDDLE OF EVERYWHERE GEOTOUR

Full of history, culture, and recreational opportunities, Marion County really is the Middle of Everywhere!

From the rolling rapids of Valley Falls State Park to the Italian influence of local bakeries, there's so much to do while visiting the area.

As part of GeoWoodstock XXI, we invite you to join us for the Middle of Everywhere GeoTour!

This officially registered tour highlights 20 of our favorite locations in the area, categorized by shops, history, murals, and parks!

The Middle of Everywhere GeoTour is comprised of four different categories with five caches each to highlight the historical, recreational, and colorful places that make Marion County great.



MARION'S MARKET

In the mood for some food? Stop in at one of our local shops or restaurants while you're finding these gadget caches.

MOE-GT #06: Connect the Dots

GCB2F9P | N 39° 28.232 W 080° 09.310

 Difficulty ★★★★★ Terrain ★

Code: _____

MOE-GT #07: On Tap

GCB2FG7 | N 39° 32.670 W 080° 07.152

 Difficulty ★★★★★ Terrain ★

Code: _____

MOE-GT #08: Cabernet Conundrum

GCB2FHH | N 39° 24.981 W 080° 10.462

 Difficulty ★★★★★★ Terrain ★★

Code: _____

MOE-GT #09: The Bee's Knees

GCB2FJ6 | N 39° 28.992 W 080° 06.886

 Difficulty ★★★★★★ Terrain ★

Code: _____

MOE-GT #10: Fine-Tuned

GCB2H3V | N 39° 27.518 W 080° 01.147

 Difficulty ★★★★★★ Terrain ★★

Code: _____

MARION'S MINING

Marion County is full of culture and history of the coal mining industry. This category explores the monuments and sights from the early days of mining.

MOE-GT #11: Home of the Pepperoni Roll

GCB2FJT | N 39° 28.299 W 080° 10.240

 Difficulty ★★ Terrain ★

Code: _____

MOE-GT #12: Number Nine

GCB2GKW | N 39° 33.807 W 080° 20.505

 Difficulty ★★ Terrain ★★

Code: _____

MOE-GT #13: Monongah Mining Disaster

GCB2GMC | N 39° 27.615 W 080° 12.824

 Difficulty ★★ Terrain ★★★★★

Code: _____

MOE-GT #14: Black Diamond

GCB2GNC | N 39° 27.668 W 080° 11.166

 Difficulty ★★★★★★ Terrain ★★

Code: _____

MOE-GT #15: Coal Country

GCB2GNV | N 39° 28.563 W 080° 06.556

 Difficulty ★★★★★★ Terrain ★★

Code: _____

MARION'S MURALS

Highlighting unique murals and art in the area, these letterbox-hybrid caches will require you to do something just a little different at each location. Don't forget to stamp your passport!

MOE-GT #16: Hometown Heroes

GCB2H2W | N 39° 28.922 W 080° 08.334

 Difficulty ★★ Terrain ★★



MOE-GT #17: Downtown

GCB2H33 | N 39° 29.048 W 080° 08.633

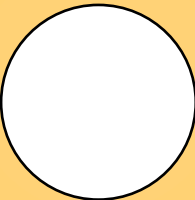
 Difficulty ★★★★★★ Terrain ★★



MOE-GT #18: Colorful Campus

GCB2H3B | N 39° 29.058 W 080° 09.708

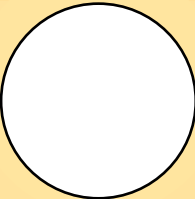
 Difficulty ★★ Terrain ★★



MOE-GT #19: Titans of Industry

GCB2H3G | N 39° 31.908 W 080° 20.589

 Difficulty ★★★★★★ Terrain ★



MOE-GT #20: Open Happiness

GCB2FM7 | N 39° 27.816 W 080° 13.403

 Difficulty ★★★★★★ Terrain ★

